

Video Guide Creator™

Content Management Software

What is a Video Guide Creator™

Video Guide Creator™ is the name for a family of products designed to allow you to provide high quality audio-visual tours to your visitors on our Videoguide. Tours can be used in Museums, Galleries, Historic Sites, and even outside. In fact there are so many applications for Video Guides we do not place any restrictions on how you use them.

The software used to develop or to edit your tours is called Video Guide Creator™ and has been developed in a way to make it as flexible as possible.

It is written for the Windows™ and Windows CE Mobile platform for Pocket PCs and is extremely versatile. It allows you to create a tour numbering system (Tour Points) and add a wide variety of content including audio, images & video.



Stage 1:

Creating an interface (the main page the visitor will use)

Video Guides Creator™ provides a simple method to customise your interface for your site.

Use any colour, font or logo you like to create the look and feel you desire.

You can also select from a list of languages to provide messages to your visitor in the language most appropriate to them. If a language hasn't been included, it's a simple task to create the required messages.



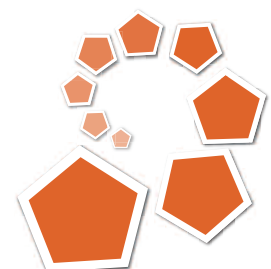
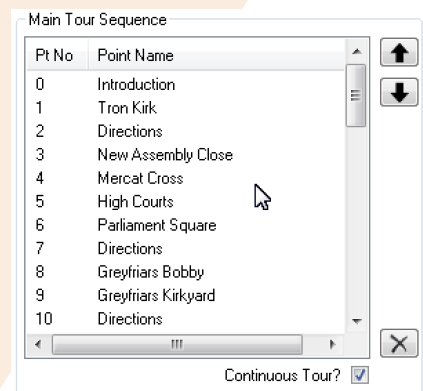
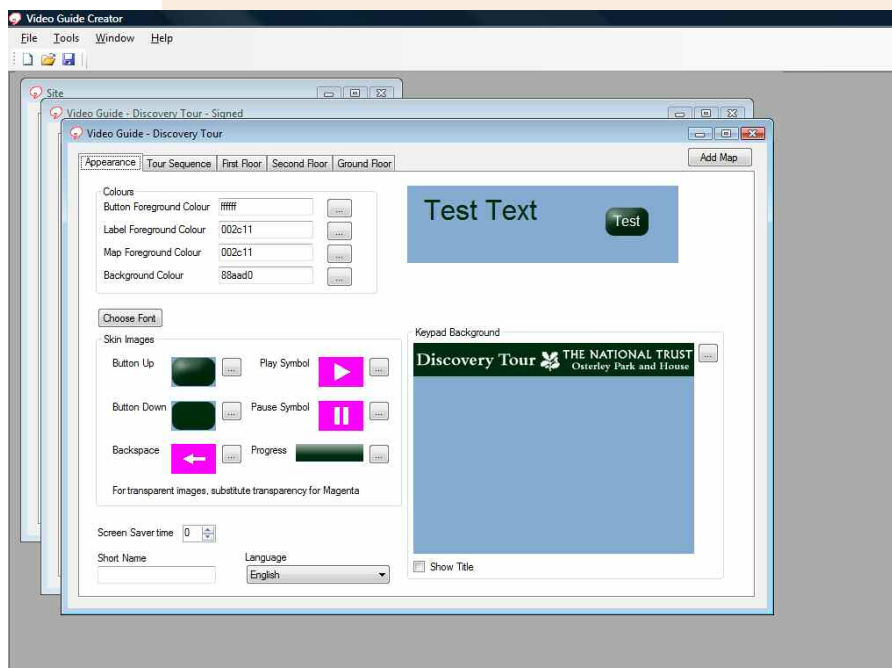
Stage 2:

Planning the structure

For any tour the route is important so the software allows you to plan a sequence of stops or points.

Changing the route or adding more points is equally easy.

Alternatively, you can make the content completely 'random access' and allow your visitor to roam and choose via the map or a virtual keypad.



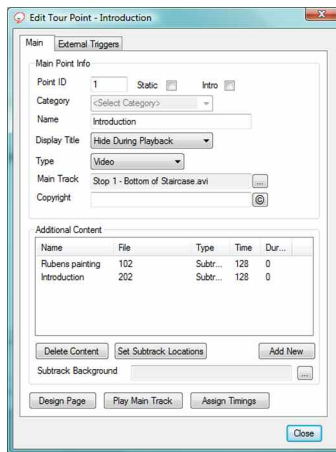
Video Guide Creator™

Content Management Software

Stage 3:

Adding your content

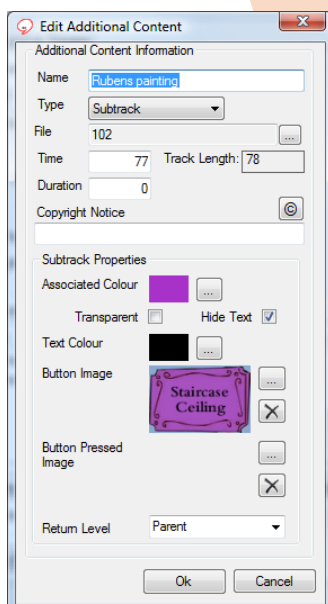
Once your tour structure is defined it is simple to add content. Select your content type: Audio, Image, Video or Flash. Add any additional content, such as images for a slide show to accompany audio playback, an animation in flash, or a link to a layer, and define its start time and duration.



Stage 4:

Configuring Layers

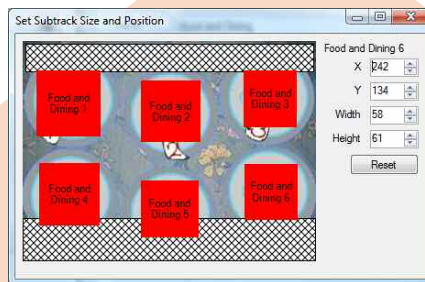
Set colours, add button images and set the level for the layer to return to on completion. Choose from Parent, which returns you to the point where the layer was called, or grandparent, which is useful when creating the answers for quizzes.



Stage 5:

Positioning Layer Buttons

The software will automatically position your layer buttons using a pre-defined size. If that doesn't suit your needs, place your layer buttons wherever you like. Just use the tool to move and resize the buttons however you need.

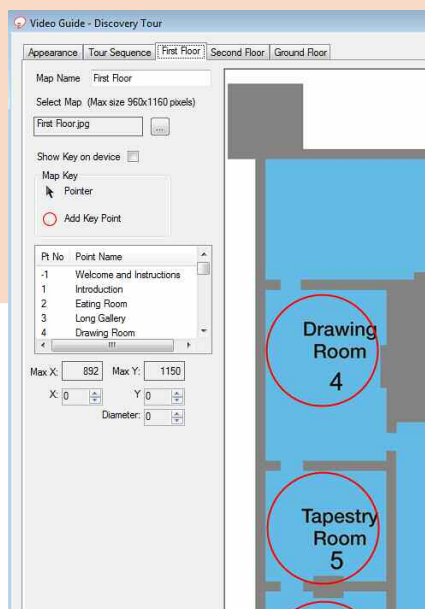


Stage 6:

Maps

The creator software has a feature allowing you to add maps to your tour, and visit the tour points, simply by clicking defined points on the map.

You can make your tour completely map driven, and by adding GPS references (for external sites); you can even make the points play automatically when you arrive at the correct point.



Stage 7:

Testing your tour

The system also comes with an emulator to run your tours on your development system, and test, before downloading to your Video Guide. All of the controls will operate in exactly the same way.



Stage 8:

Downloading to your Device

You can also install straight to your device by either removing the flashcard from the Video Guide or by placing it in a cradle or charging rack and following the instructions.

Additional Software:

GPS Walker

The GPS Walker is a separate program that will allow the designer to plot the GPS position by walking the route.

